

Marmorino



da|moto

Marmorino plays with polar opposites of soft and hard materials that create contrasts and combinations of shades. The leather band that intersects the marble can be used to hold everyday objects. The coffee table is available in two widths.

Marmorino gioca con le opposizioni di materiali morbidi e duri che creano contrasti e abbinamenti di tonalità, presentando un'ampia possibilità di personalizzazione. La fascia in cuoio che interseca il piano in marmo può essere utilizzata per fermare oggetti di utilizzo quotidiano. Il tavolino è disponibile in due larghezze.



## Marmorino side tables

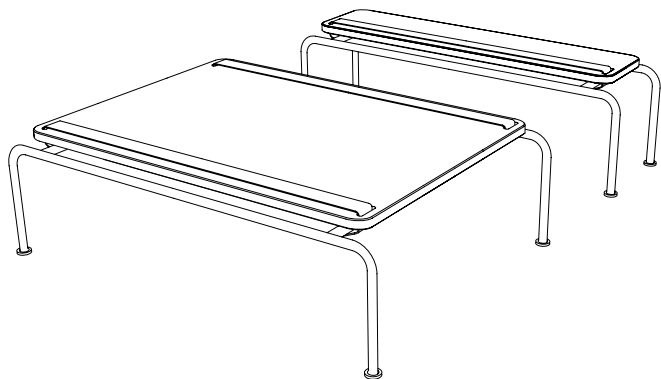
Disponibile in due dimensioni / Available in two sizes:

W 920 mm x D 660 mm x H 280 mm

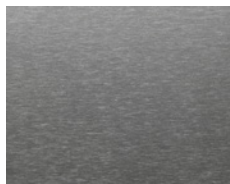
L 920 mm x P 660 mm x H 280 mm

W 920 mm x D 260 mm x H 280 mm

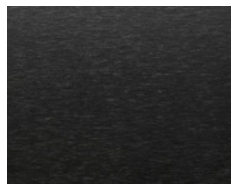
L 920 mm x P 260 mm x H 280 mm



METALS / METALLI

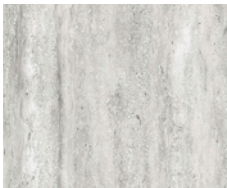


Nichel Marino



Nichel Marino Black

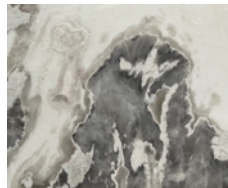
MARBLES / MARMI



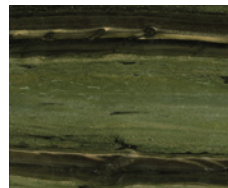
Travertino Titanium



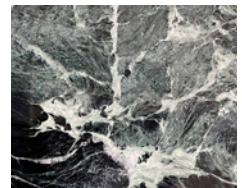
Grigio Orobico



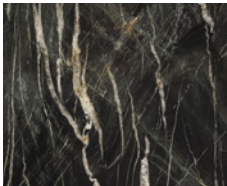
Dover White



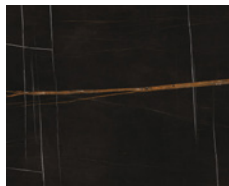
Bamboo



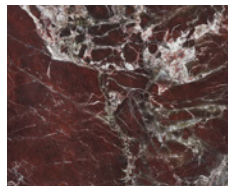
Verde Alpi Spazzolato



Belvedere Nero  
spazzolato



Sahara noir

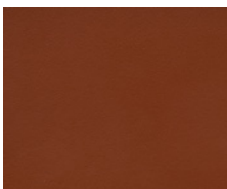


Rosso Lepanto

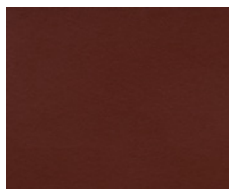


Calacatta rhino

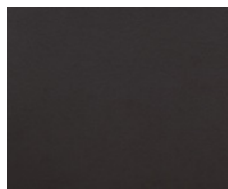
LEATHER / CUOIO



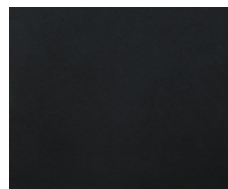
Rosso Bulgaro



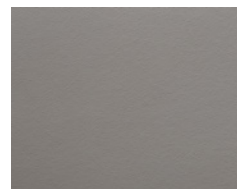
London



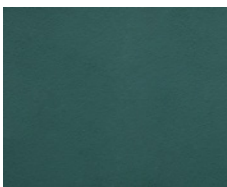
Testa di Moro



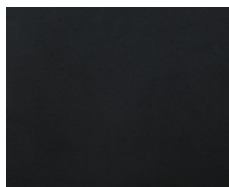
Nero



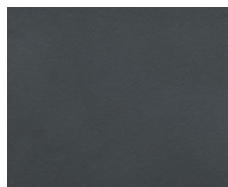
Tortora



Verde Bosco



Cuoietto Nero



Cuoietto Grigio



Il catalogo e i prodotti sono soggetti ad aggiornamenti. Le colorazioni e le raffigurazioni visibili sul catalogo hanno valore puramente indicativo e possono presentare leggere differenze dal prodotto originale in quanto riportate con un procedimento di stampa. Eventuali discordanze tra prodotto finito e rappresentazione non costituiscono motivo di reclamo, essendo l'ordine effettuato l'unico parametro di riferimento. Le quote riportate sono indicative e potrebbero avere lievi differenze date dal fatto che le nostre lavorazioni sono realizzate a mano.

Catalogues and products are subject to improvements. Colors and pictures in the catalogue are not binding and may slightly differ if compared with the true product since they are obtained by a printing process. Possible differences between ready-made product and its representation cannot cause any complaint, since the purchase order is the only binding reference document. The amount reported are indicative and may slightly vary due to the fact that our machining operations are performed manually.

Vindelino Srl

Via Rodari 9, Como  
22100, Italy

+39 031 3731943  
info@dalmoto.com

dalmoto.com