

da|moto

dalmoto (dal moto)
/from movement/

Neologism in the Italian language, everything that takes its source from movement.

Dalmoto is a philosophy, a way of seeing the reality that surrounds us. Behind every object there is a vision: transmitting dynamism and speed with a different design approach, rich in contaminations and non-traditional canons of furnishing. The speed of the lines, chromatic color choices, attention to and redistribution of proportions are distinctive hallmarks of Dalmoto.

The aim is to generate apparently utopian environments through the collection, in which the pieces interact with each other and evoke a constant sensation of movement in contrast to the classic stylistic staticity of furniture, redefining our way of living. The representation of an increasingly dynamic and frenetic reality often comes from the past, investigating the works of the great Futurist painters of the 20th century, such as Giacomo Balla and Umberto Boccioni, or from the evocative ideals of the architect Sant'Elia, whose mission was to visually represent the architecture of a city in motion as a sign of a constantly evolving society.

The privileged location of Lake Como offers the ideal setting for hosting the collection, in strong connection with the rigorous geometry of Rationalism, which finds its maximum expression in the territory. The study of the perfect interaction between architecture and nature has suggested the development of a collection of furniture suitable even for outdoor use, celebrating the perfect relationship with the surrounding landscape.

We believe in the art of Italian craftsmanship, its history, and the stories of those who build, of those who continue to make things by hand, so that this value can continue and be read and perceived in every product. Each product is entirely handmade, combining tradition and innovation. Our craftsman transforms the material with their unique and innovative skills, creating functional and beautiful furniture and objects. These elements enrich the space and our relationship with the world, thanks to their painstaking details and durability.



dalmoto (dal moto)
/dal movimento/

Neologismo della lingua italiana, tutto ciò che trae origine dal movimento.

Dalmoto è una filosofia, un modo di vedere la realtà che ci circonda. Dietro ogni oggetto c'è una visione: trasmettere dinamismo e velocità con un approccio progettuale differente, ricco di contaminazioni e canoni non tradizionali dell'arredamento. La velocità di linea, scelte cromatiche, attenzione e ridistribuzione alle proporzioni sono tratti identificativi di Dalmoto.

L'intenzione è creare attraverso la collezione ambienti apparentemente utopici in cui i pezzi interagiscono tra loro ed evocano la costante sensazione di movimento in contrapposizione alla classica staticità stilistica dei mobili ridefinendo il nostro modo di abitare. La rappresentazione di una realtà sempre più dinamica e frenetica deriva spesso dal passato, indagando le opere dei grandi pittori futuristi del XX secolo, come Giacomo Balla e Umberto Boccioni, o dagli ideali evocativi dell'architetto Sant'Elia, la cui missione era quella di rappresentare visivamente le architetture di una città in movimento come traccia di una società in continua evoluzione.

La posizione privilegiata del Lago di Como offre lo scenario ideale per ospitare la collezione in forte legame con la rigorosa geometricità del Razionalismo che trova nel territorio la sua massima espressione. Lo studio della perfetta integrazione tra architettura e natura ha suggerito lo sviluppo di una collezione di arredi utilizzabili anche in ambienti esterni che celebrassero il perfetto legame con il paesaggio circostante.

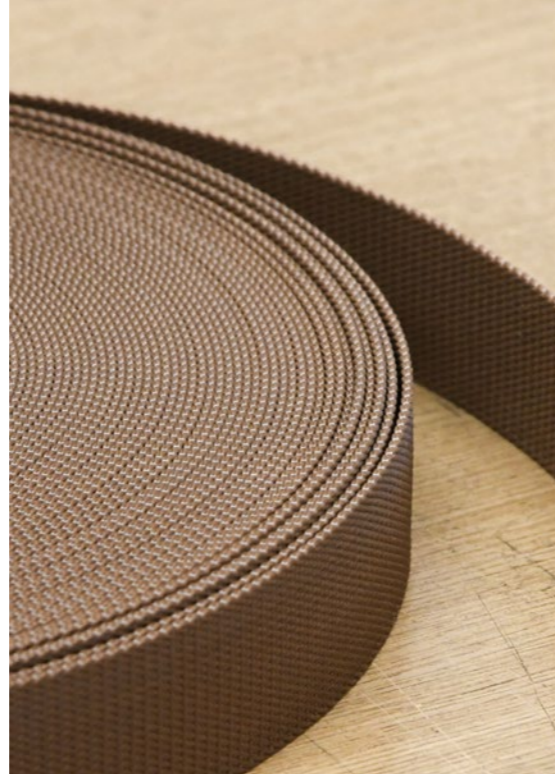
Crediamo nell'arte dell'artigianalità italiana, nella sua storia e nelle storie di chi costruisce, di chi continua a fare le cose a mano, così che questo valore possa continuare ed essere percepito in ogni prodotto. Ogni singolo prodotto è interamente realizzato a mano combinando tradizione ed innovazione. I nostri artigiani trasformano la materia grazie alle loro abilità uniche ed innovative, creando arredi funzionali e belli. Questi elementi arricchiscono lo spazio e il nostro rapporto con il mondo, grazie ai loro dettagli curati e alla loro durata nel tempo.



Francesco Manfredi and Tommaso Lorenzini studied design in Turin, specializing in Yacht & Car. Today they work in their atelier on the peaceful shores of Lake Como. During their career, they have collaborated on projects in the Italian and international yachting world, working on the creation of innovative boats. Their connection to the Como area and its lake has strongly influenced the formal and functional inspiration behind the collection. Their background in the automotive world, combined with an artistic approach linked to their passion for the great Futurist painters of the 20th century, has given rise to a furniture line with a distinctive style. The representation of movement is part of their design process and they sometimes use cultural, artistic, and historical references as inspiration for their collections. In 2023 Dalmoto was presented, raising the interest of international galleries and interior designers.

Francesco Manfredi e Tommaso Lorenzini studiano design a Torino, specializzandosi nel settore Yacht & Car. Oggi lavorano nel loro atelier sulle tranquille rive del lago di Como. Durante il loro percorso, hanno contribuito a progetti legati al mondo della nautica italiana e internazionale, collaborando alla realizzazione di imbarcazioni innovative. Il legame con il territorio di Como e il suo lago ha fortemente contribuito ad una ispirazione formale e funzionale della collezione. Il loro background nel mondo automotive, unito ad un approccio artistico legato dalla passione per i grandi pittori Futuristi del XX secolo, dà vita a una linea di arredi dallo stile distintivo. La rappresentazione del movimento fa parte del loro approccio progettuale e talvolta utilizzano riferimenti culturali, artistici e storici come ispirazione della collezione. Nel 2023 viene presentato Dalmoto, suscitando l'interesse di gallerie e interior designers internazionali.





Kylíndo outdoor

The Kylíndo armchair is an outdoor seat with reimagined proportions. Born from an extrusion of cylinders, a geometric figure derived from the complete rotation of a rectangle around one of its sides. The low seat is designed to create a cosy and intimate environment with the surrounding nature. Water-repellent fabrics and nautical-inspired ropes create sophisticated combinations and contrasts, ideal for a poolside or yacht deck. Available in various upholstery variants.

La poltrona Kylíndo è una seduta da esterno dalle proporzioni ripensate, nata da un gioco di estrusione di cilindri, figura geometrica che deriva dalla rotazione completa di un rettangolo attorno a uno dei suoi lati. La seduta bassa è pensata per creare un ambiente raccolto e intimo con la natura circostante. Tessuti idrorepellenti e cime di ispirazione nautica creano abbinamenti e contrasti ricercati, ideali per essere posizionati a bordo piscina o sul deck di uno yacht. Disponibile in più varianti di rivestimento.















Silos / Olis

Silos and Olis are metal coffee tables with a resin top. Their shape derives from the study of railway silos. Hence the ideally light and continuously rotating volume. The lower structure is an interplay of weaves that give it a sculptural appearance, which can also be used as a storage space for light objects. The top is made of hand-cast epoxy resin. This process produces unique nuances that make each piece of furniture unique, just like a piece of art. Available in two versions (Silos high, Olis low) with the possibility of customizing finishes and colours.

Silos e Olis sono tavolini in metallo con piano in resina. La loro forma deriva dallo studio dei silos ferroviari. Da qui lo scheletro del volume idealmente leggero e in continua rotazione. La struttura inferiore è un gioco di intrecci che donano un aspetto scultoreo, utilizzabile anche come spazio per custodire oggetti leggeri. Il piano è in resina epossidica colata a mano. Questo processo permette di ottenere sfumature uniche che rendono ogni arredo irripetibile, proprio come un'opera d'arte. Disponibili in due versioni (Silos alto, Olis basso) con possibilità di personalizzare finiture e colorazioni.









Kylíndo



The Kylíndo armchair is an indoor lounge chair. The low seat creates a cosy and intimate ambience. Made of the highest quality materials such as fine fabrics, leather and handcrafted metals. Available in several upholsteries and leather shades to create sophisticated combinations.

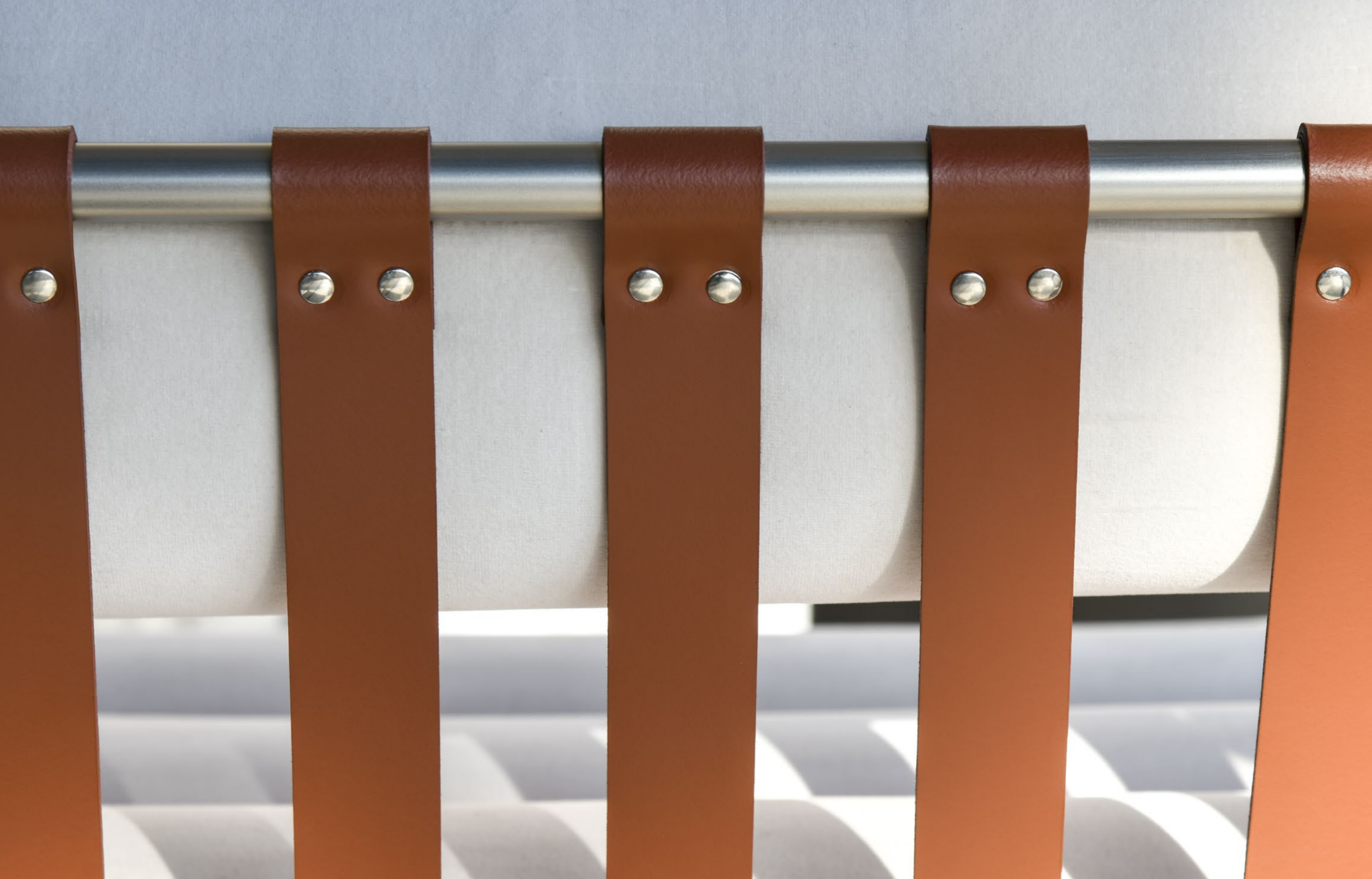
La poltrona Kylíndo è una seduta lounge da interno. La seduta bassa crea un ambiente intimo e confortevole. Realizzata con materiali di altissima qualità: tessuti pregiati, cuoio e metalli lavorati a mano. Disponibile in più varianti di rivestimento e di tonalità di cuoio per creare abbinamenti sofisticati.















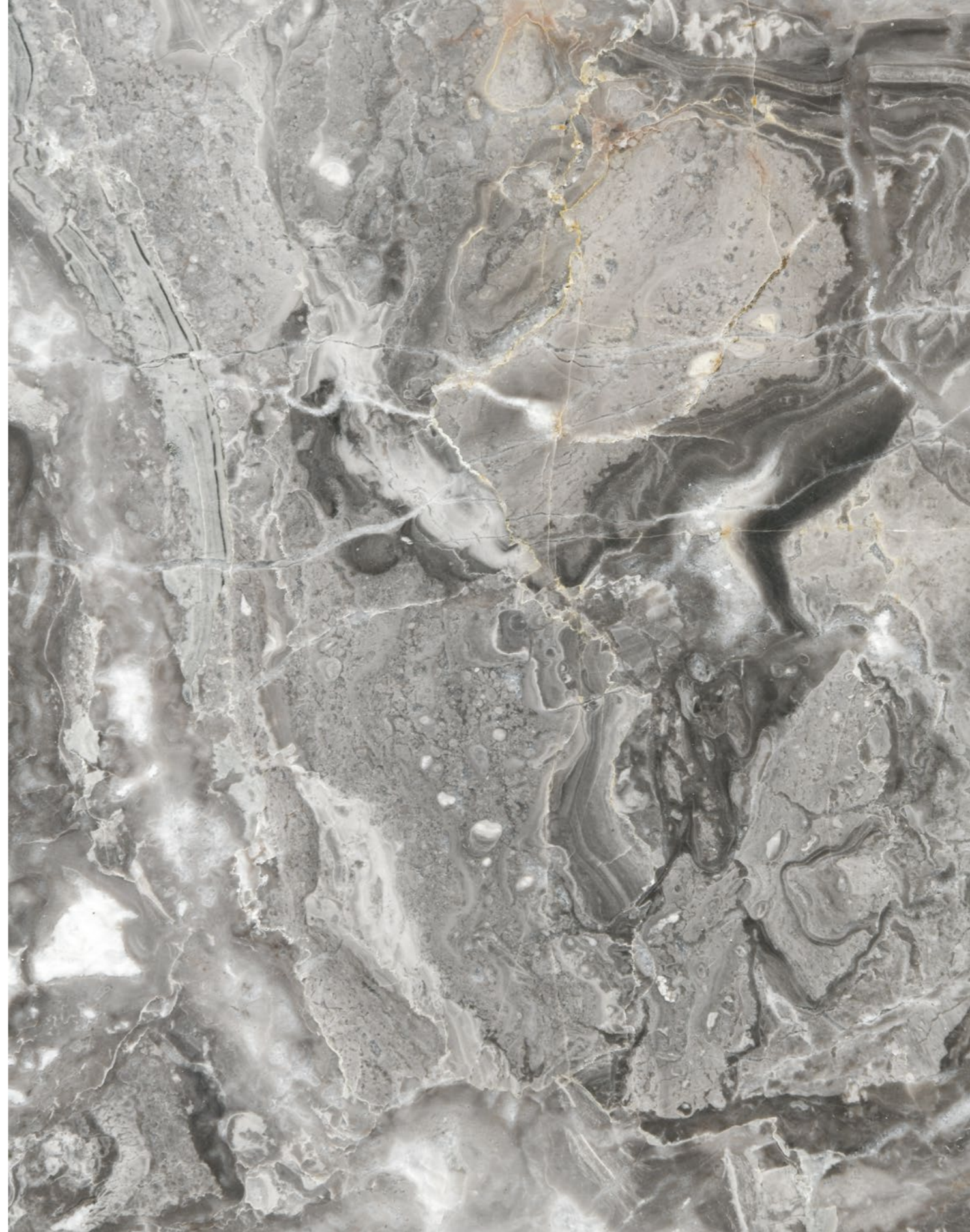
Marmorino

Marmorino plays with polar opposites of soft and hard materials that create contrasts and combinations of shades. The leather band that intersects the marble can be used to hold everyday objects. The coffee table is available in two widths and in outdoor versions with different finishes.

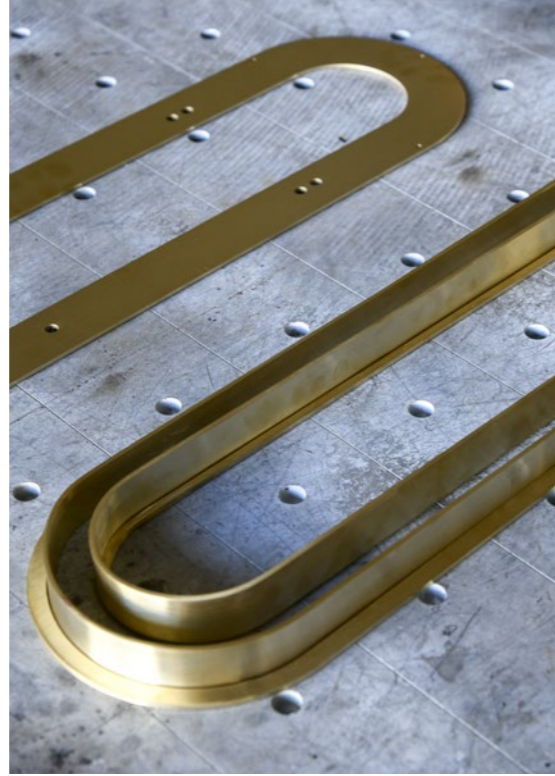
Marmorino gioca con le opposizioni di materiali morbidi e duri che creano contrasti e abbinamenti di tonalità, presentando un'ampia possibilità di personalizzazione. La fascia in cuoio che interseca il piano in marmo può essere utilizzata per fermare oggetti di utilizzo quotidiano. Il tavolino è disponibile in due larghezze e nella versione da esterno in diverse finiture.







Loop

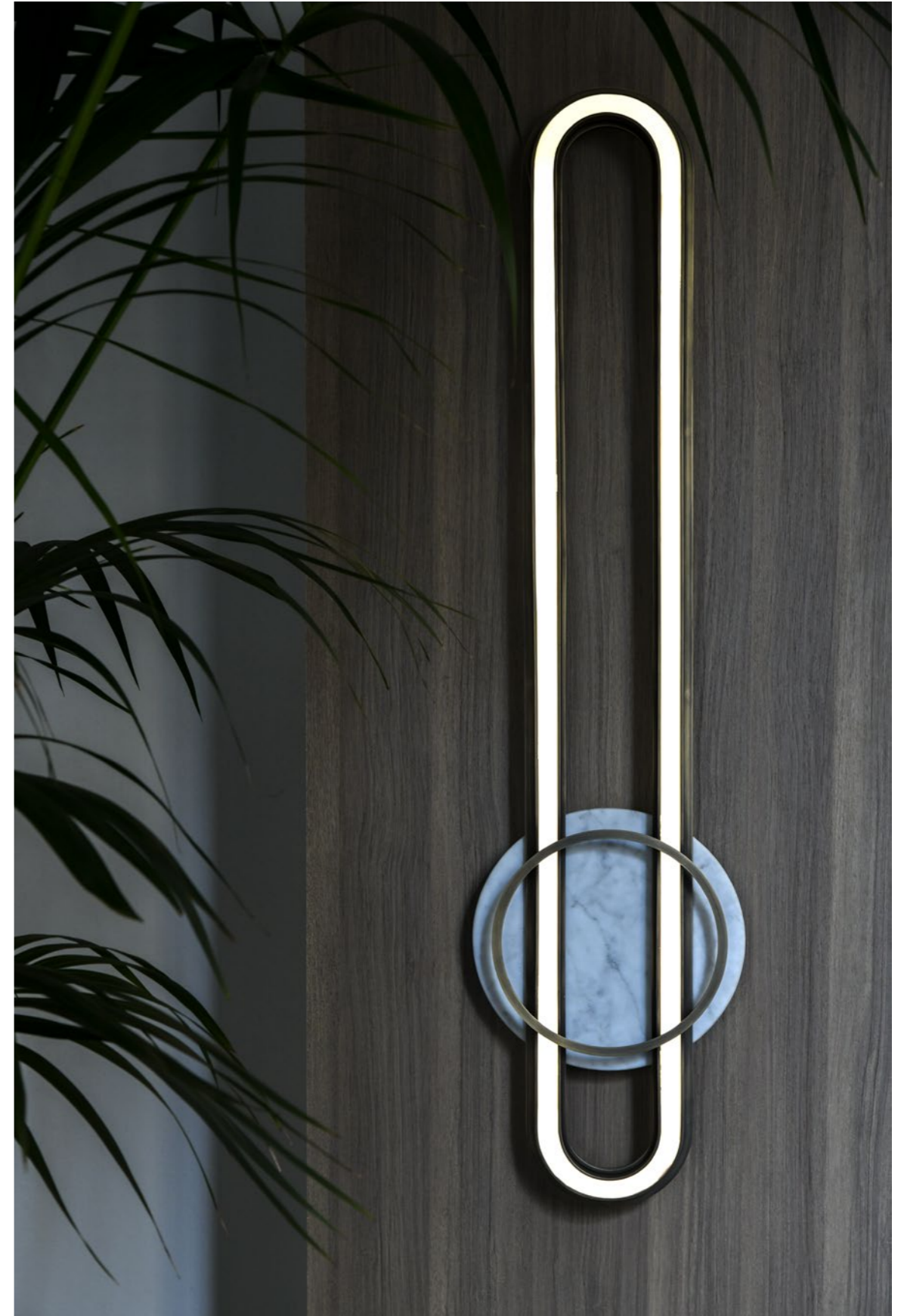


Loop is a wall lamp that accentuates diffused light with a shape that emphasises a circular movement to give dynamism. The wall light is available in two sizes and the structure is composed of a hand-curved galvanized brass frame combined with a marble roundel. Stone types and light intensity can be customised.

Loop è una applique a luce diffusa con una forma che enfatizza un movimento circolare continuo, atto a donare dinamismo. La struttura è composta da un telaio in ottone galvanizzato curvato a mano abbinato ad un quadrante di marmo. Disponibile in due dimensioni con possibilità di personalizzare tipologie di pietre e intensità della luce.

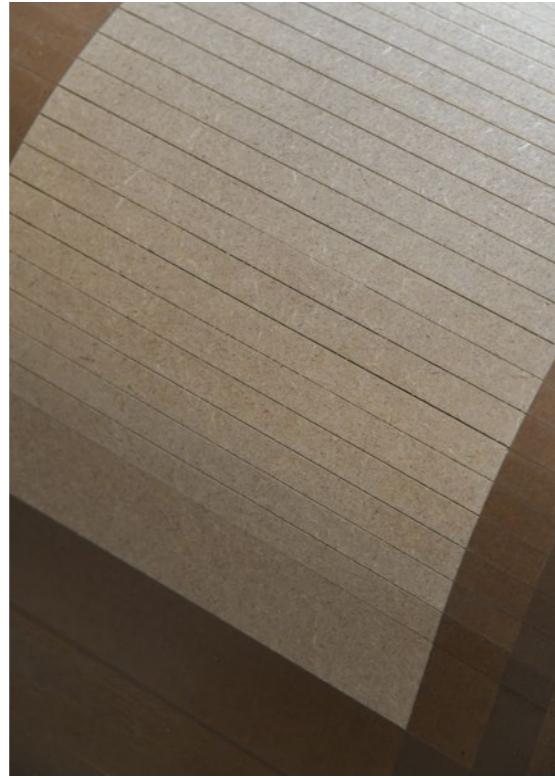








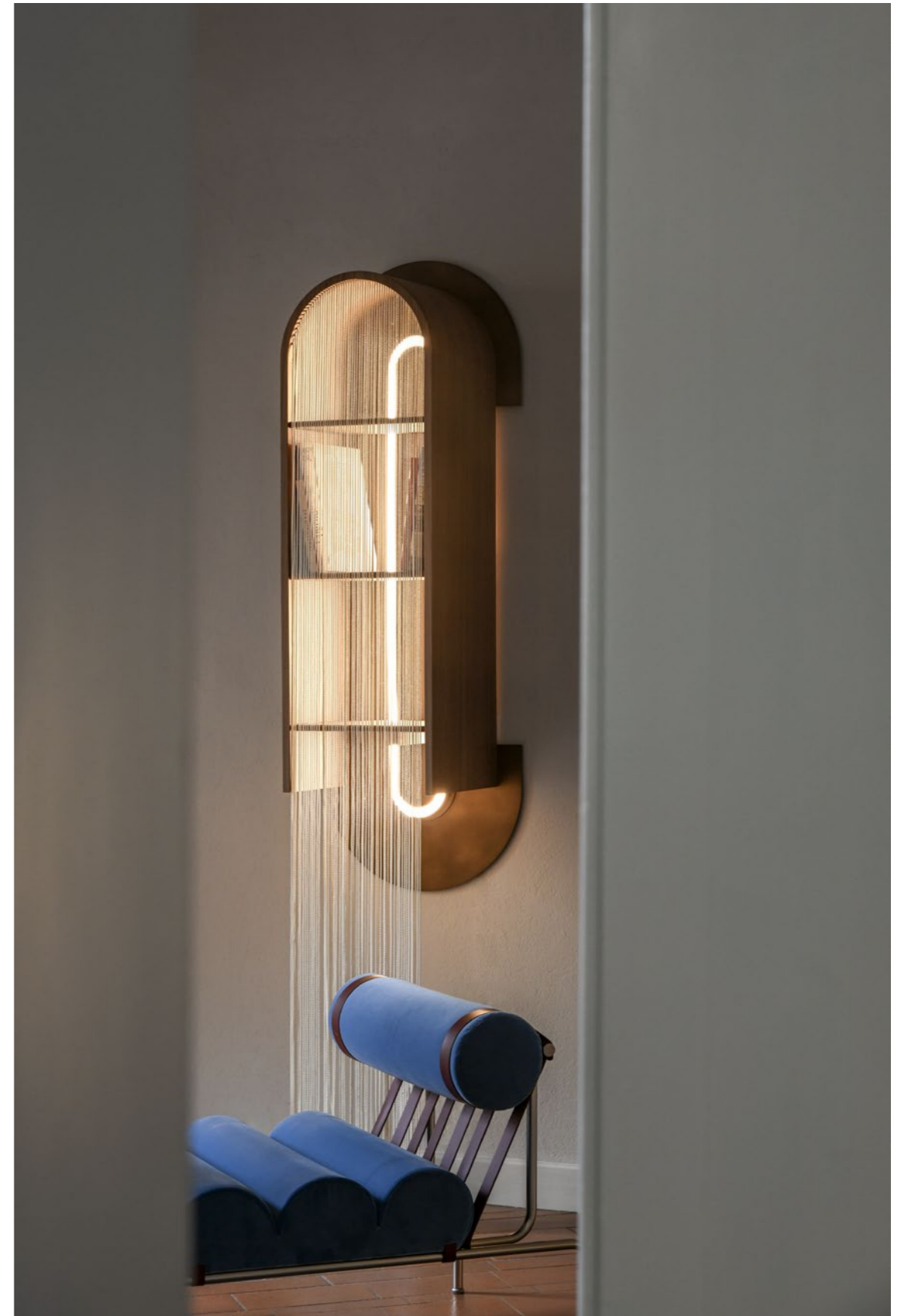
Loom



Loom is a wall cabinet that celebrates two excellences of the region: the skill of craftsmanship in the process of bending wood and the Como tradition of weaving. The dimmable lighting, combined with the fabric filaments, creates an evocative play of light. The wall unit can be installed individually or in multiples creating an exciting choreography. Available in various wood types and with the possibility of customising metal finishes.

Loom è un pensile da parete che celebra due eccellenze del territorio: la capacità degli artigiani nei processi di curvatura del legno e la tradizione comasca della tessitura. L'illuminazione a intensità di luce variabile, abbinata ai filamenti di tessuto, crea un gioco di luce suggestivo. Il pensile può essere installato singolarmente o in multipli, dando vita ad una coreografia emozionante. Disponibile in più essenze di legno e con la possibilità di personalizzare finiture metalliche.









Sister Moon

Sister Moon is a dining chair evoking the moon in its two phases; the full moon represented in the circular backrest and the crescent moon in the sickle-shaped seat. Its eclipse shape suggests a sense of lightness that, paired with the veined marble insert in the backrest, celebrates its spirit. Precious materials such as Dedar Bouclé & Chenille fabrics and stainless steel are combined to create an elegant and sophisticated seating experience. Details like the double leg or the curvature of the seat remind us of a feeling of dynamism and tension that testifies to the Dalmoto identity.

Sister Moon è una seduta da tavola che evoca la luna nelle sue due fasi; luna piena rappresentata nello schienale circolare e luna crescente nel sedile a forma di falce. La sua forma ad eclissi evoca un sentimento di leggerezza che, abbinata all'inserto in marmo venato dello schienale, celebra la sua essenza. Materiali pregiati quali tessuti Dedar Bouclé & Ciniglia e acciaio inox si coniugano per creare un'esperienza di seduta elegante e sofisticata. Dettagli come la doppia gamba o la curvatura del sedile richiamano una sensazione di dinamicità e tensione che testimoniano l'identità Dalmoto.







Kyl



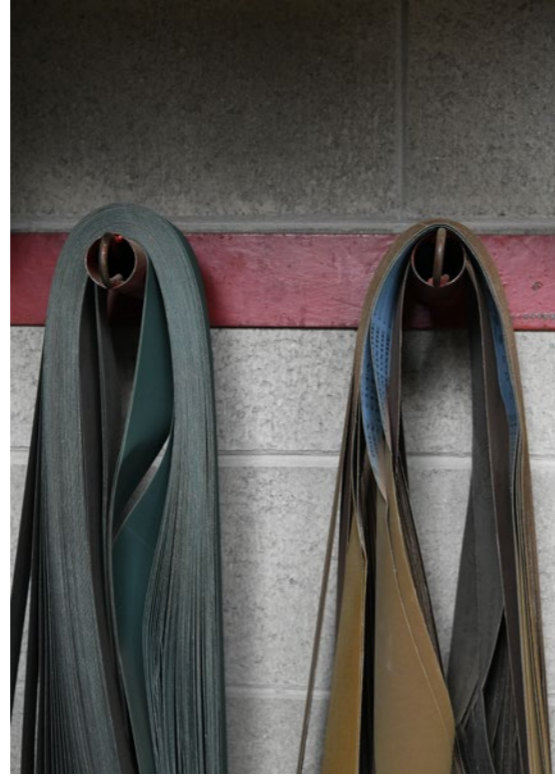
Kyl is a fabric pouf inspired by the lines of the Kylíndo armchair. The modular pouf is versatile; available in a long version, which can be used as a bench, or a short version, which can also be used individually in combination with the Kylíndo armchair. Created from the extrusion of cylinders in repetition. Available with a wide range of covers and also in outdoor versions with different finishes.

Kyl è un pouf in tessuto pregiato ispirato alle linee della poltrona Kylíndo. Disponibile in versione lunga, utilizzabile come panca, o corta, usato singolarmente anche in abbinamento alla seduta Kylíndo. Nasce dall'estrusione di cilindri in ripetizione. Disponibile con un'ampia gamma di rivestimenti e anche nella versione da esterno in diverse finiture.









Sister Moon Outdoor

Sister Moon is a distinctive reference to the moon in its eclipse and full moon phases. Thanks to highly durable nautical-derived materials, the chair is suitable for outdoor spaces. The Sapelli Mahogany is the finest quality of this extraordinary wood used in the manufacture of Sister Moon. Due to its exceptional durability, Mahogany has been employed since early times in boat construction. A remarkable 14-layer lacquer cycle makes the essence waterproof, giving it extreme durability to the outdoor environment and the same iconic high-gloss finish that features Riva's vintage motorboats.

Sister Moon è un chiaro richiamo alla luna nelle sue fasi di eclissi e plenilunio. Grazie a materiali di derivazione nautica altamente resistenti, la sedia è adattabile ad ambienti esterni. Il Mogano Sapelli è la qualità più pregiata di questa straordinaria essenza impiegata nella realizzazione di Sister Moon. Grazie alla sua estrema durabilità, il Mogano viene utilizzato fin dall'antichità nella costruzione di imbarcazioni. Un importante ciclo di verniciatura a 14 mani rende l'essenza impermeabile, conferendogli un'estrema resistenza all'ambiente esterno e la stessa iconica finitura lucida che caratterizza i motoscafi d'epoca Riva.







Technical data





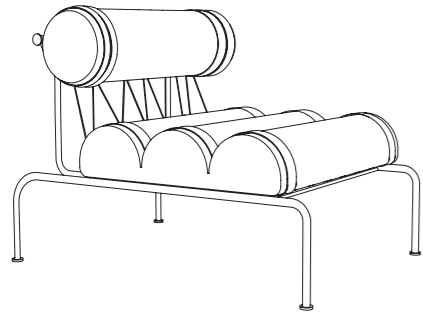
Outdoor use

Kylíndo armchair outdoor

Available in one size / Disponibile in un'unica dimensione:

W 67 x D 92 x H 40-69 cm

L 67 x P 92 x H 40-69 cm



The armchair comes with an additional lumbar cushion to regulate the backrest according to the user's preferences / La poltrona è dotata di un cuscino lombare aggiuntivo per regolare lo schienale in base alle preferenze del utilizzatore

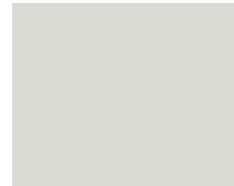
METALS / METALLI



RAL 7043 semiopaco



RAL 1019 semiopaco



RAL 9002 semiopaco

ROPES / CORDE



Bianco



Grigio

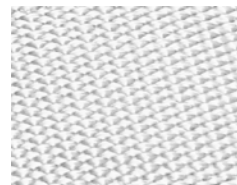


Nero

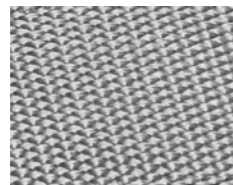


Ecrù

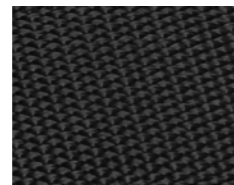
BANDS / FASCE



Bianco



Grigio



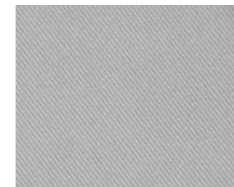
Nero



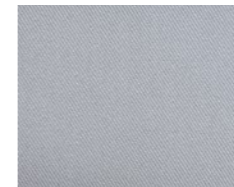
Tabacco

FABRICS / TESSUTI

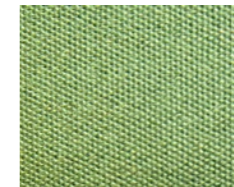
PLAIN / TINTA UNITA



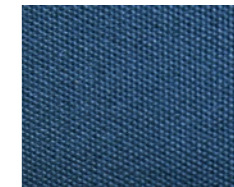
Bianco Lunare



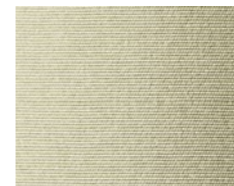
Perle Nacrée



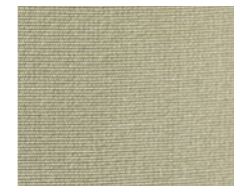
Verde Oasi



Blu Lago

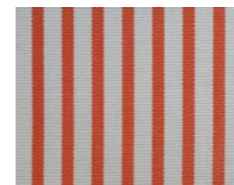


Beige



Ecrù

STRIPED / RIGATI



Carrot Stick



Fondo Roccioso



Sale e Pepe

Marmorino side table / coffee table outdoor

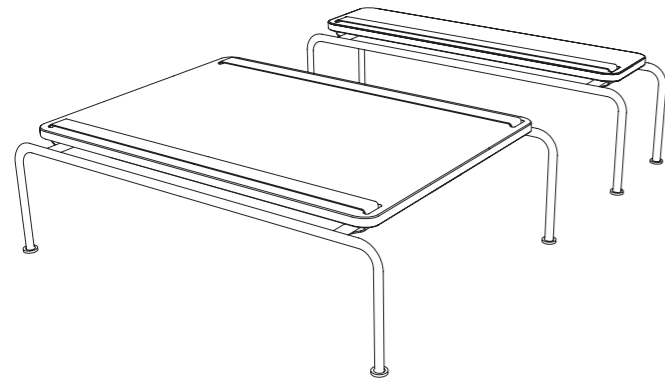
Available in two sizes / Disponibile in due dimensioni:

W 92 x D 66 x H 28 cm

L 92 x P 66 x H 28 cm

W 92 x D 26 x H 28 cm

L 92 x P 26 x H 28 cm



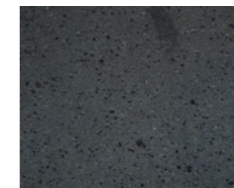
MARBLES / MARMI



Travertino Titanium



Grigio Orobico



Pietra Lavica



Bianco Carrara

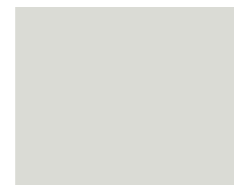
METALS / METALLI



RAL 7043 semiopaco

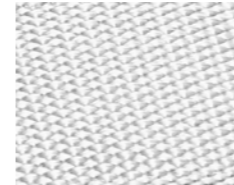


RAL 1019 semiopaco

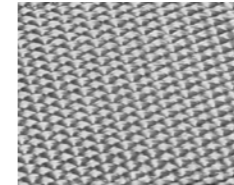


RAL 9002 semiopaco

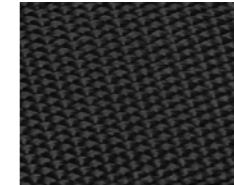
BANDS / FASCE



Bianco



Grigio



Nero



Tabacco

Kyl pouf outdoor

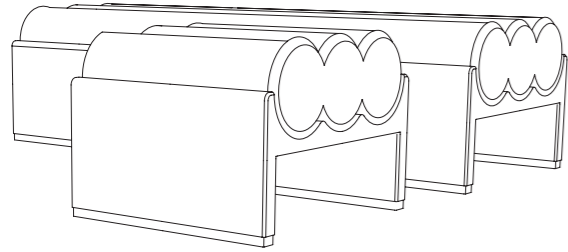
Available in two sizes / Disponibile in due dimensioni:

W 51 x D 55 x H 40 cm

L 51 x P 55 x H 40 cm

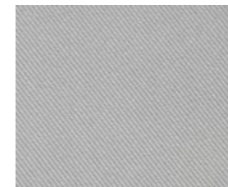
W 163 x D 55 x H 40 cm

L 163 x P 55 x H 40 cm

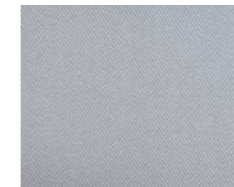


FABRICS / TESSUTI

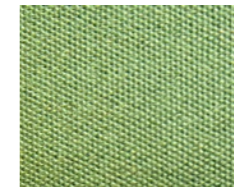
PLAIN / TINTA UNITA



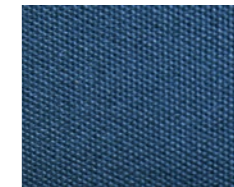
Bianco Lunare



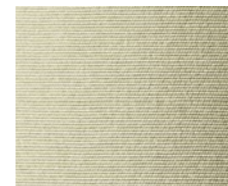
Perle Nacrée



Verde Oasi



Blu Lago



Beige



Ecrù

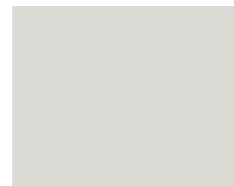
METALS / METALLI



RAL 7043 semiopaco



RAL 1019 semiopaco



RAL 9002 semiopaco

STRIPED / RIGATI



Carrot Stick



Fondo Roccioso



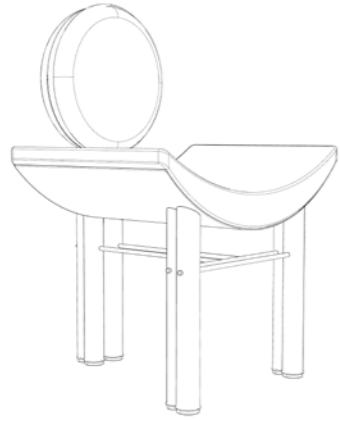
Sale e Pepe

Sister Moon chair outdoor

Available in one size / Disponibile in un'unica dimensione:

W 65 x D 55 x H 46-95 cm

L 65 x P 55 x H 46-95 cm

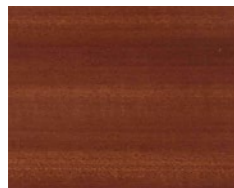


METALS / METALLI



Nichel Marino

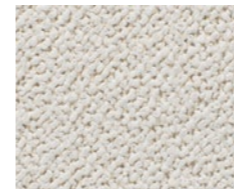
WOODS / ESSENZE



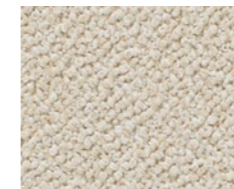
Mahogany

FABRICS / TESSUTI

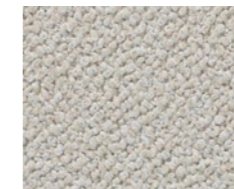
BOUCLÉ outdoor - residential and contract use / uso residenziale e contract



Neige

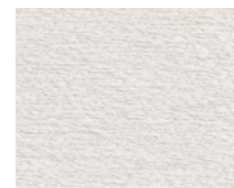


Rice



Smoke

CHENILLE / CINIGLIA indoor&outdoor - residential and contract use / uso residenziale e contract



Bianco



Duna



Laguna



Pietra



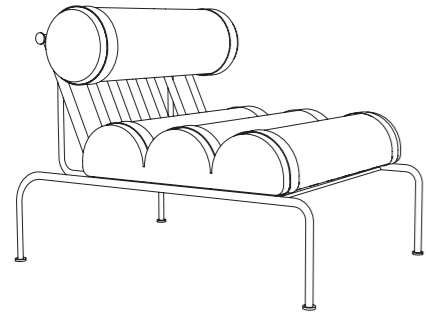
Indoor use

Kylíndo armchair

Available in one size / Disponibile in un'unica dimensione:

W 67 x D 92 x H 40-69 cm

L 67 x P 92 x H 40-69 cm

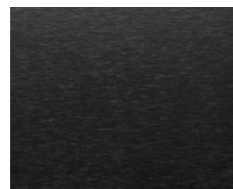


The armchair comes with an additional lumbar cushion to regulate the backrest according to the user's preferences / La poltrona è dotata di un cuscino lombare aggiuntivo per regolare lo schienale in base alle preferenze del utilizzatore

METALS / METALLI

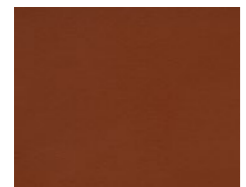


Nichel Marino

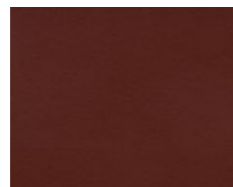


Nichel Marino Black

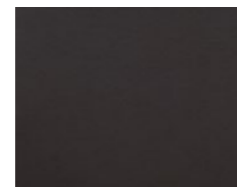
LEATHER / CUOIO



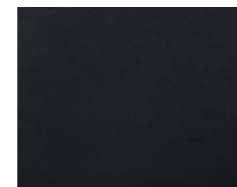
Rosso Bulgaro



London



Testa di Moro



Nero



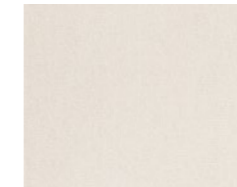
Tortora

FABRICS / TESSUTI

VELVET / VELLUTO - residential use / uso residenziale



Jeans



Ostrica



Oliva

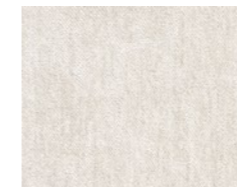


Rose thè



Seppia

CHENILLE / CINIGLIA - residential use / uso residenziale



Ostrica



Mousse



Ninfea



Canyon

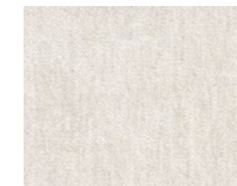


Indigo

CHENILLE / CINIGLIA - contract use / uso contract



Notte



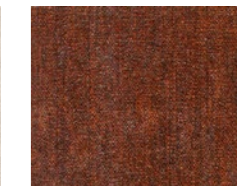
Ostrica



Mousse



Nude



Canyon

BOUCLÉ - residential use / uso residenziale



Avorio

MODERN WOOL / LANA MODERNA residential and contract use / uso residenziale e contract



Tender rose



Atlantique



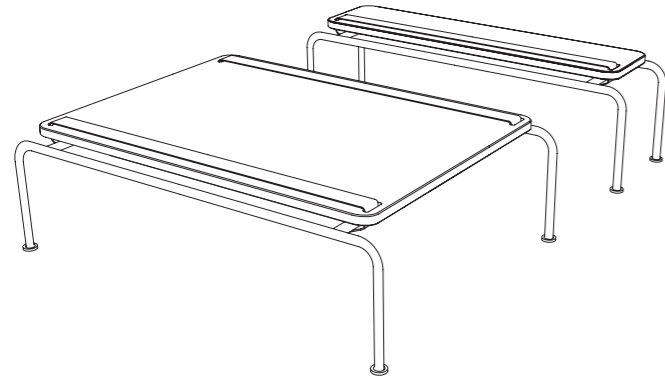
Agave

Marmorino side table / coffee table

Available in two sizes / Disponibile in due dimensioni:

W 92 x D 66 x H 28 cm
L 92 x P 66 x H 28 cm

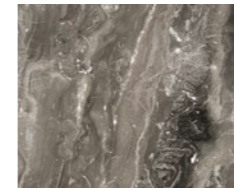
W 92 x D 26 x H 28 cm
L 92 x P 26 x H 28 cm



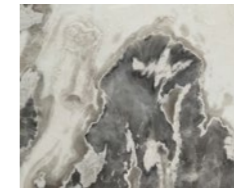
MARBLES / MARMI



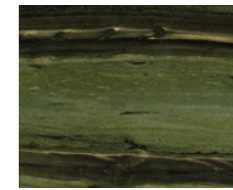
Travertino Titanium



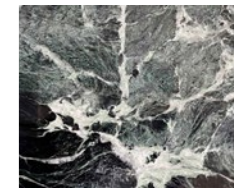
Grigio Orobico



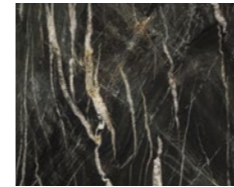
Dover White



Bamboo



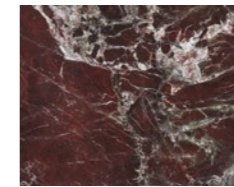
Verde Alpi Spazzolato



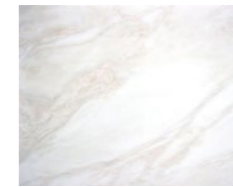
Belvedere Nero
spazzolato



Sahara noir

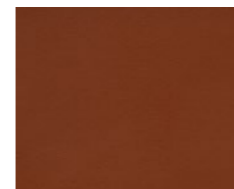


Rosso Lepanto

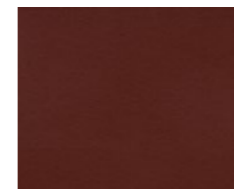


Calacatta rhino

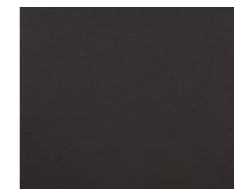
LEATHER / CUOIO



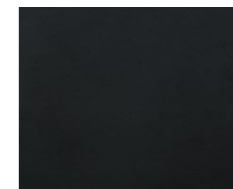
Rosso Bulgaro



London



Testa di Moro

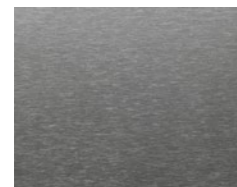


Nero

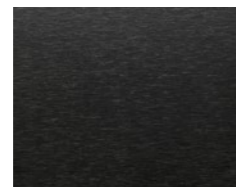


Tortora

METALS / METALLI



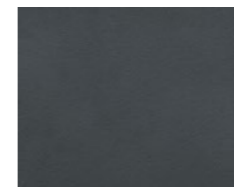
Nichel Marino



Nichel Marino Black



Verde Bosco



Grigio

Kyl pouf

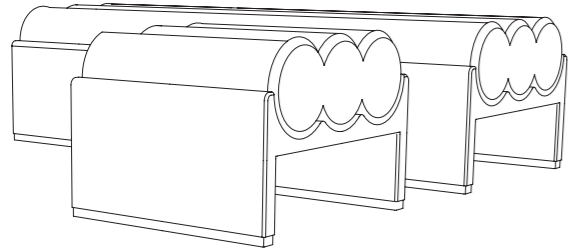
Available in two sizes / Disponibile in due dimensioni:

W 51 x D 55 x H 40 cm

L 51 x P 55 x H 40 cm

W 163 x D 55 x H 40 cm

L 163 x P 55 x H 40 cm

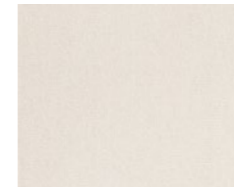


FABRICS / TESSUTI

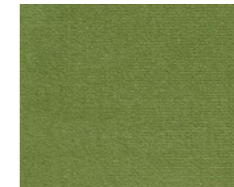
VELVET / VELLUTO - residential use / uso residenziale



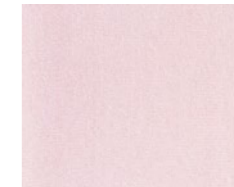
Jeans



Ostrica



Oliva

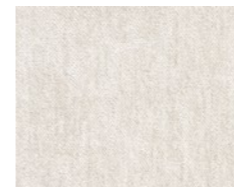


Rose thè

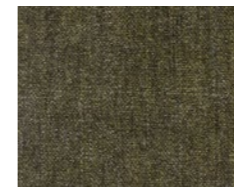


Seppia

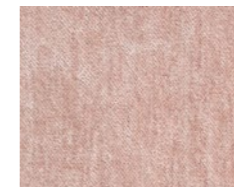
CHENILLE / CINIGLIA - residential use / uso residenziale



Ostrica



Mousse



Ninfea



Canyon

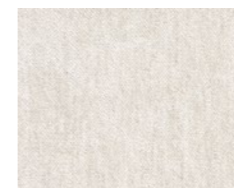


Indigo

CHENILLE / CINIGLIA - contract use / uso contract



Notte



Ostrica



Mousse

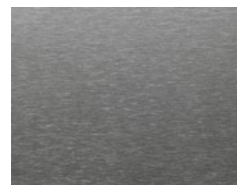


Nude

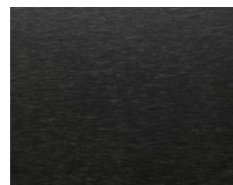


Canyon

METALS / METALLI



Nichel Marino



Nichel Marino Black

BOUCLÉ - residential use / uso residenziale



Avorio

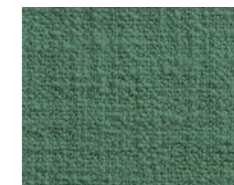
MODERN WOOL / LANA MODERNA
residential and contract use / uso residenziale e contract



Tender rose



Atlantique



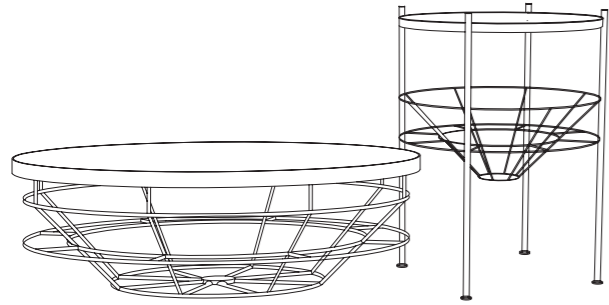
Agave

Silos / Olis side table / coffee table

Available in two sizes / Disponibile in due dimensioni:

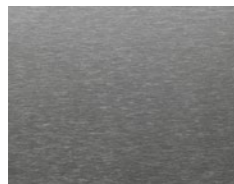
Silos: D 54 x H 67 cm

Olis: D 95 x H 30 cm

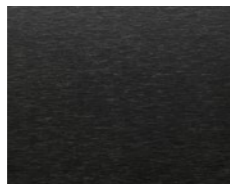


Single color option with gradual fade / Liquid texture option
Opzione monocolora con sfumatura graduata / Opzione texture liquida

METALS / METALLI

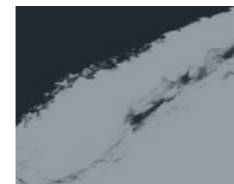


Nichel Marino

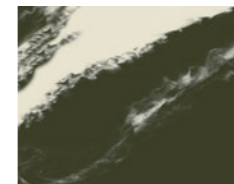


Nichel Marino Black

RESINS / RESINE



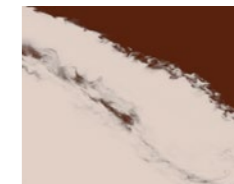
Gray



Green



Blu



Pink



Ivory

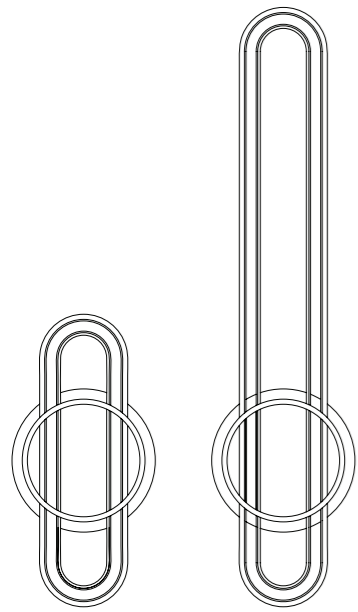
Loop wall lamps

Available in two sizes / Disponibile in due dimensioni:

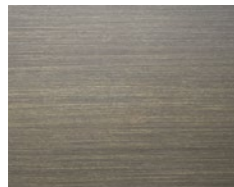
W 28 x D 8 x H 57 cm
L 28 x P 8 x H 57 cm

W 28 x D 8 x H 115 cm
L 28 x P 8 x H 115 cm

LED
2700 kelvin
3000 kelvin

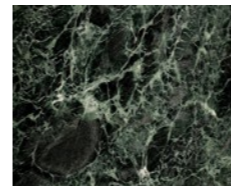


METALS / METALLI



Ottone Brunito
Spazzolato

MARBLES / MARMI



Verde Alpi



Grigio Orobico



Rosso Lepanto



Bianco Carrara

Loom cabinet

Available in one size / Disponibile in un'unica dimensione:

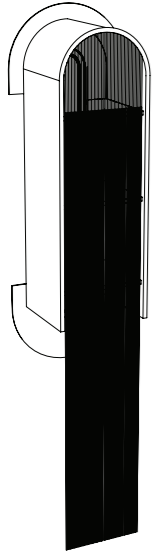
W 50 x D 36 x H 150 cm

L 50 x P 36 x H 150 cm

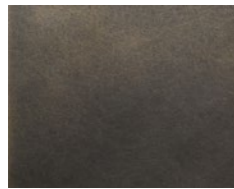
LED

2700 kelvin

3000 kelvin



METALS / METALLI



Ottone Delabré

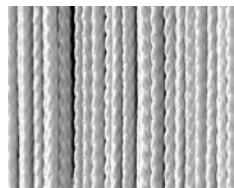


Nichel Marino



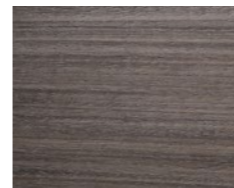
Materico

ROPES / CORDE

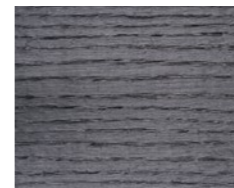


Bianco

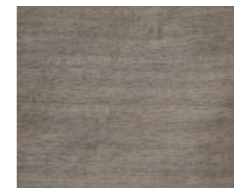
WOODS / ESSENZE



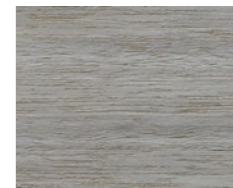
Tay



Oak Black



Tanganika Frisé



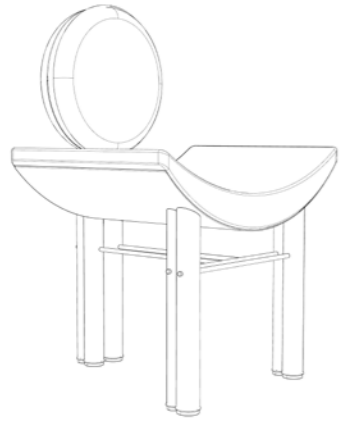
Eucalipto

Sister Moon chair

Available in one size / Disponibile in un'unica dimensione:

W 65 x D 55 x H 46-95 cm

L 65 x P 55 x H 46-95 cm



METALS / METALLI



Nichel Marino

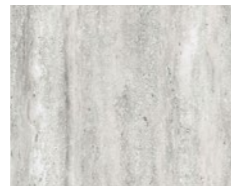
MARBLES / MARMI



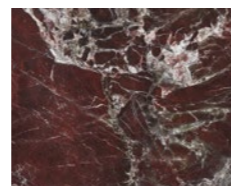
Dover White



Sahara Noir



Travertino



Rosso Lepanto



Verde Alpi

FABRICS / TESSUTI

BOUCLÉ - residential and contract use / uso residenziale e contract



Ivory



Duna



Perla



Antracite

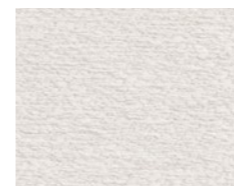


Charcoal

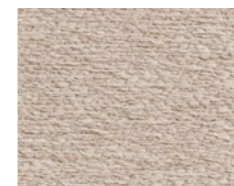


Nacre Rosée

CHENILLE / CINIGLIA indoor&outdoor - residential and contract use / uso residenziale e contract



Bianco



Duna



Laguna



Pietra

Art direction and photography Lorenzo Butti

Thanks to:

Villa Leoni, Lenno

Villa del Grumello, Como

Printed in Italy, 2025

Vindelino Srl

Via Rodari 9, Como
22100, Italy

+39 031 3731943
info@dalmoto.com

dalmoto.com